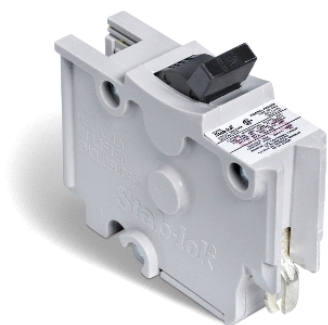


Product datasheet
Characteristics

NA15
STAB-LOK CIRCUIT BREAKER 120V 15A 1P



Main

Range of product	Stab-lok
Product or component type	Miniature circuit-breaker
[In] rated current	15 A
[Ue] rated operational voltage	120 V AC
Poles description	1P
Breaking capacity	10 kA

Complementary

Mounting mode	Plug-in
Electrical connection	Screw connector
AWG gauge	AWG 14...AWG 2 (copper)

Environment

product certifications	CSA
------------------------	-----

The information provided in this documentation contains general descriptions and/or technical characteristics of the performance of the products contained herein. This documentation is not intended as a substitute for and is not to be used for determining suitability or reliability of these products for specific user applications. It is the duty of any such user or integrator to perform the appropriate and complete risk analysis, evaluation and testing of the products with respect to the relevant specific application or use thereof. Neither Schneider Electric Industries SAS nor any of its affiliates or subsidiaries shall be responsible or liable for misuse of the information contained herein.